



March 2012
Issue 1

Editor: Margo Landis 841-3699

Volunteers:

- Dawn Stiglitz
- Margo Landis
- Jan Worley
- Dennis Emrich
- Janet Emrich
- Brian Black
- Ryan Holmes
- Sam Kerns
- Steve Turkle
- Dr. Marci Johnson
- David Poynter
- Randy Belles
- Larry Pecenka
- Tom Tilma
- Mike Marasco
- Phil Svymbersky
- Steve Stelljes

Partners:

- APAC-Kansas, *Jim Ralston*
- Ash Grove Resources Inc.,
Brady E. Fryor
- The City of Wichita
- Spirit AeroSystems,
Steve Turkle
- MKEC, *Jason Gish*
- Wichita Sports Commission,
Bob Hanson
- Robl Construction,
Randy Belles
- SnappyPhoto,
Phil Svymbersky
- IAM, *Kathy S. Petersen*
- IBEW, *Jim Davis*
- SPEEA, *Debbie Logsdon*
- KFDI, *John Wright, Jr.*

Central Plains Youth Sports

During the past few years we have contacted many of you for help to build a facility that will support thousands of kids in this community each year and each year after that.

We are sending this newsletter out to almost 1000 potential Volunteers and Partners. Please consider joining us as we put our "Road To Success" into place and build this wonderful facility for our kids.

To reacquaint you with Central Plains Youth Sports; **our vision** is



to build 18 Baseball and Softball fields and make them available to teams and kids in south-central Kansas.

Our community facility will be host to up to 250,000 athletes and their spectators annually. We anticipate that a half million people will flow through this facility each year.



It's all about the kids

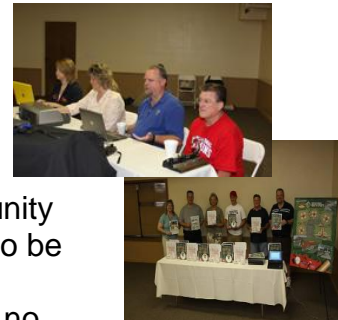
Each field can accommodate **240** softball or baseball players each year and for each year after that.

Upon completion of the entire facility, up to **4,000** kids will be able to participate each week.



We are proud of our teams of volunteers that help with building marketing material, technology, web management, project development, increasing awareness in the community and just good fellowship. These volunteers will also be the strength to operating this facility.

If you are interested in joining our volunteer team, no invitations are required. Contact us at: galen@cpys.org or call 316 371-8615.



Central Plains Youth Sports is urgently requesting help for completion of this facility for the summer Baseball and Softball season in 2013.

If you know of anyone or any company that might consider an offer to donate funding or work-in-kind to go towards providing Asphalt /Concrete for the parking lot, Fencing for the fields, Sod & Sprinkler systems please share this with them.

Next issue we will share our "Road To Success" model, our list of Partners and a profile of some of our volunteers dedicated to making this a success.

Page 2 of this newsletter is a brief description of our progress to date.

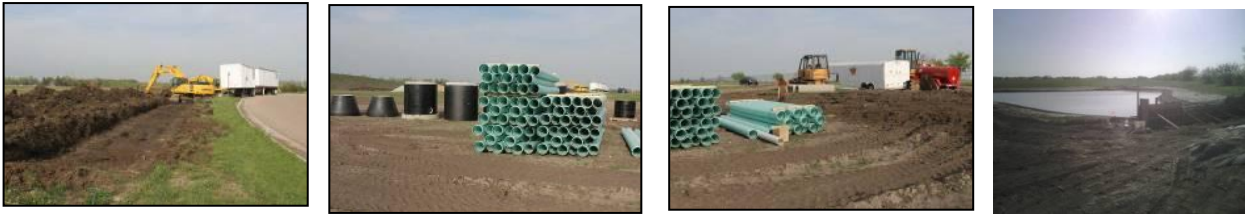
To date we have committed approximately \$800,000 in resources:
To provide Architectural concepts and designs as well as Civil Engineering.



For Site grading - Dirt has been moved to the appropriate elevation to support optimum drainage.



For installation of Storm sewer, water and field drainage pipes infrastructure – Lake is in place



Next activities – build fields and parking lot

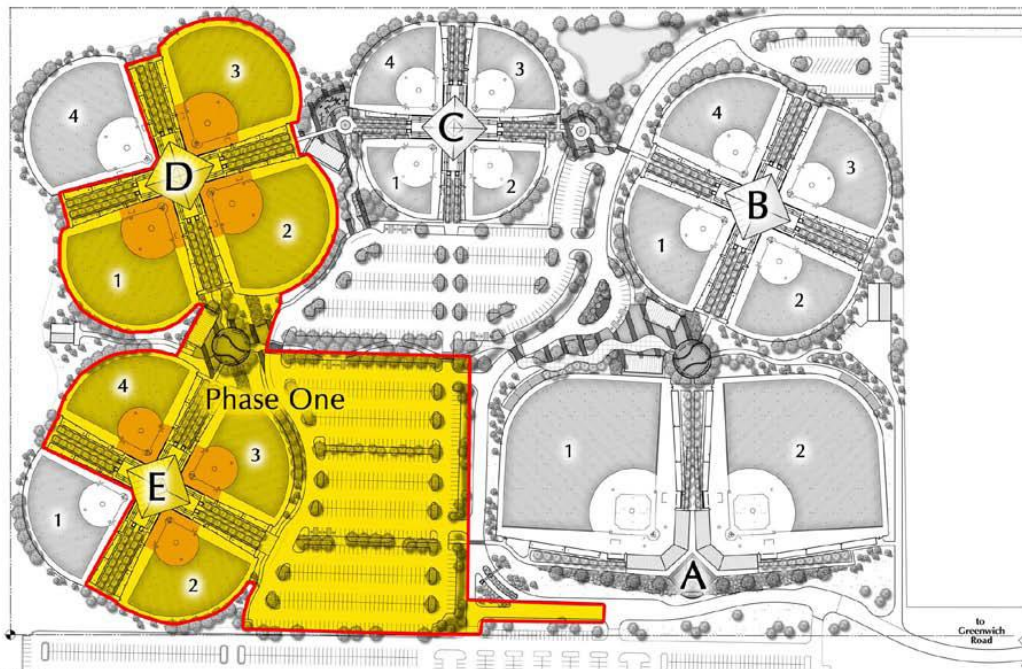


Exhibit 'A'
Central Plains Youth Sports
Northeast Baseball Complex Phase Map
Date: October 2007

